

## Homework

## Activity 1

Solve the problems by multiplying across, then simplify.

1.  $\frac{2}{5} \cdot \frac{1}{2}$

2.  $\frac{3}{4} \cdot \frac{1}{3}$

3.  $\frac{2}{4} \cdot \frac{1}{2}$

4.  $\frac{2}{8} \cdot \frac{2}{3}$

5.  $\frac{3}{9} \cdot \frac{3}{4}$

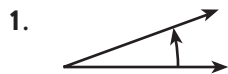
6.  $\frac{4}{10} \cdot \frac{1}{2}$

7.  $\frac{3}{7} \cdot \frac{1}{3}$

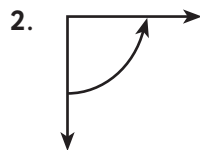
8.  $\frac{4}{6} \cdot \frac{1}{2}$

## Activity 2

Identify the type of angle. Write a, b, or c on your paper.



- (a) Acute  
(b) Right  
(c) Obtuse



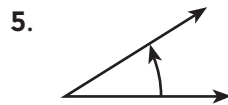
- (a) Acute  
(b) Right  
(c) Obtuse



- (a) Acute  
(b) Right  
(c) Obtuse



- (a) Acute  
(b) Right  
(c) Obtuse



- (a) Acute  
(b) Right  
(c) Obtuse



- (a) Acute  
(b) Right  
(c) Obtuse

## Activity 3 • Distributed Practice

Solve.

1.  $\frac{1}{2} + \frac{1}{8}$

2.  $\frac{1}{6} + \frac{4}{9}$

3.  $\frac{1}{7} + \frac{8}{7}$

4.  $\frac{24}{25} - \frac{2}{5}$

5.  $\frac{8}{16} - \frac{1}{2}$

6.  $\begin{array}{r} 4,780 \\ -2,999 \\ \hline \end{array}$